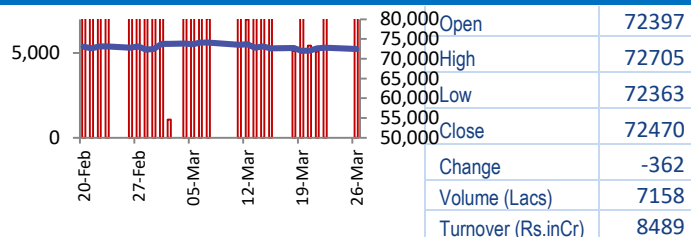
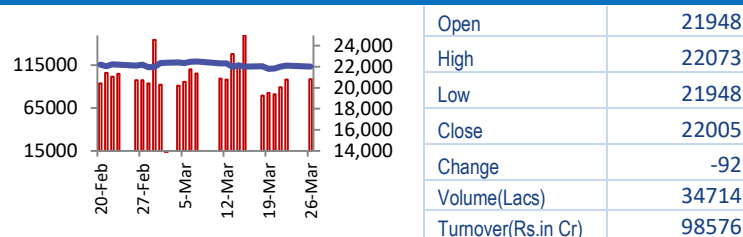


BSE



NSE



World Markets	Current	Previous	Pt. Chg	Var(%)
Dow	39282	39314	(31)	-0.1%
Dow Futures	39781	39680	101	0.3%
Nasdaq	16316	16384	(69)	-0.4%
FTSE	7931	7918	13	0.2%
Nikkei	40805	40398	407	1.0%
Hang Seng	16569	16618	(49)	-0.3%
Gift Nifty	22047	22068	(21)	-0.1%
Straits Singapore	3253	3233	19	0.6%
South Korea	2755	2757	(3)	-0.1%
Taiwan	20170	20126	43	0.2%
Shanghai	3018	3031	(13)	-0.4%

Commodity Prices	Current	Previous	Pt. Chg	Var(%)
Copper (\$/MT)	8815	8862	(47.0)	-0.5%
Alumin (\$/MT)	2293	2304	(10.5)	-0.5%
Zinc (\$/MT)	2433	2442	(9.0)	-0.4%
Brent Crude (\$/bbl)	85.3	86.3	(0.9)	-1.1%
Gold (\$/Ounce)	2176	2179	(2.9)	-0.1%
Silver (\$/Ounce)	24.4	24.5	(0.1)	-0.2%
Light Crude (\$/bbl)	80.9	81.6	(0.8)	-0.9%
N G (\$/mmbtu)	1.8	1.8	(0.0)	-1.2%
Sugar (\$/MT)	653.4	641.4	12.0	1.9%
Rubber (Rs./kg)	182.0	183.0	(1.0)	-0.5%
Baltic Dry Index	1989	2123	(134.0)	-6.3%

Currency Exchange Rate	Current	Previous	Var(%)
Rs./\$ rate	83.29	83.43	-0.16%
Rs./ Euro	90.41	90.24	0.19%
Rs./Chinese Yuan	11.60	11.54	0.50%
Yen /\$ rate	151.88	151.56	0.21%
\$ US/Euro	1.08	1.08	-0.04%

Dollar Index	Current	Previous	Var(%)
Dollar Index	104.41	104.30	0.10%

Support/ Resistance Levels for Today		
	Nifty	Bank Nifty Fut
Support 1	21940	46600
Support 2	21870	46470
Resistance	22070	46860

Securities in Ban For Trade
SAIL

Market Review

US: US stocks reversed gains late in Tuesday's trading day as markets continued to take a breather from a record-setting run that's become the story on Wall Street during the first quarter of the year.

Asia: Stocks in Asia advanced Wednesday after US benchmarks wiped out gains in the final half hour of trading, with investors tweaking portfolios after a rally that's already topped \$4 tn this year.

India: Sensex languished in the negative zone on Tuesday weighed by persistent selling in key index heavyweights such as - Reliance, HDFC Bank, Infosys and Bharti Airtel. **Market is expected to open on flattish note and likely to witness sideways move during the day.**

Global Economy: Chinese industrial profits grew sharply in the first two months of 2024, reflecting some improvement in factory activity after a lull through most of the prior year, although the strong reading was also driven by a lower base for comparison. Industrial profit grew 10.2% y-o-y in the Jan-Feb period, compared with a 22.9% slide in the same period last year. Industrial profits also fell 4.4% year-on-year in Dec.

Australian consumer price index inflation remained steady in Feb, slightly missing expectations and further factoring into a less hawkish outlook for the Reserve Bank of Australia. CPI inflation rose 3.4% year-on-year in Feb. The reading was slightly below expectations of 3.5% and remained steady from the prior month.

Commodities: Gold price trades in the red below \$2,180 early Wednesday, reversing the previous day's uptick. The US Dollar remains on front foot, as market sentiment sours and the USD/JPY uptrend regains momentum. Focus shifts to Fed Governor Waller's speech.

Oil prices fell for a second day on Wednesday after a report that crude stockpiles in the U.S., the world's biggest oil user, surged and on signs major producers are unlikely to change their output policy at a technical meeting next week.

Currency: The dollar steadied on Wednesday in the wake of more strong US economic data, nudging the Japanese yen closer to a test of levels that drew official market intervention back in 2022.

FII Derivative Transactions (Rs. Cr)

Contracts	Purchase		Sell		Net Value	Open Interest (OI)		OI (Previous day)		Change	
	Contract	Value	Contract	Value		Contract	Value	Contract	Value	Contract	Value
Index Future	104293	9260	110111	10141	(881)	221974	19994	234911	21155	(12937)	(1161)
Index Option	21335464	1775919	21504124	1789265	(13346)	4310371	389694	3663655	335283	646716	54411
Stock Future	1504399	122543	1494474	121602	941	3176960	256571	3110201	249806	66759	6765
Stock Option	455803	39181	463655	39974	(793)	324167	27717	357199	30556	(33032)	(2839)
Total	23399959	1946903	23572364	1960982	(14079)	8033472	693976	7365966	636800	667506	57176

FII All Activity-BBG (Rs Cr)	Buy	Sell	Net
18-Mar-24	11282	12448	(1167)
19-Mar-24	17224	15873	1351
20-Mar-24	11258	13500	(2243)
21-Mar-24	14476	15803	(1327)
22-Mar-24	16805	20677	(3871)
Month to date-Mar	308561	278536	30025
FII (Prov.) (Rs Cr)	Buy	Sell	Net
19-Mar-24	16839	15418	1421
20-Mar-24	10600	13200	(2599)
21-Mar-24	14246	16073	(1827)
22-Mar-24	17460	20770	(3310)
26-Mar-24	22714	22704	10
Month to date- Mar	321026	320070	956
DII (Prov.) (Rs. Cr)	Buy	Sell	Net
19-Mar-24	16887	9437	7449
20-Mar-24	11532	8865	2668
21-Mar-24	12950	9742	3209
22-Mar-24	12729	8964	3765
26-Mar-24	14130	9106	5024
Month to date-Mar	207436	155014	52422
FII Debt - BBG (Rs. Cr)	Buy	Sell	Net
18-Mar-24	1463	2244	(781)
19-Mar-24	1232	1667	(435)
20-Mar-24	4386	2227	2159
21-Mar-24	1920	978	941
22-Mar-24	531	4075	(3545)
Month to date-Mar	34273	24460	9812

Market Breadth	BSE		NSE	
	No.	%	No.	%
Advance	1369	33%	859	32%
Decline	2603	64%	1742	65%
Unchanged	119	3%	69	3%

Market Turnover	26-Mar	22-Mar	Var (%)
BSE Cash	8489	7911	7%
NSE Cash	98576	98227	0%
NSE Futures	329768	256893	28%
NSE Options	33879644	17982819	88%
Total (Rs.Cr)	34316477	18345850	87%

Volatility Index	26-Mar	22-Mar
Volatility Index	12.82	12.22

Index PE - TTM	26-Mar	Yr. High	Yr. Low
Sensex	24.9	26.0	21.9
Nifty	22.7	28.8	20.0

Corporate News

Wipro GE Healthcare: Scaling local, going global with Rs 8,000 crore investment

Wipro GE Healthcare aims to increase localisation in manufacturing in the country from 50 per cent currently to 70–80 per cent. The products slated for export include positron emission tomography-computed tomography (PET-CT) used for cancer diagnosis, CT, and MRI coils. (ET)

L&T board to raise funds worth Rs 7,500 crore

L&T has approved a proposal to raise funds worth Rs 7,500 crore. These funds would be raised in the form of external commercial borrowings, term loans, non-convertible debentures, or any other instrument as may be appropriate. The company's board also approved the appointment of MSKA & Associates as statutory auditors for a term of five years, subject to the approval of shareholders. (BS)

CI clears Adani Power's purchase of Lanco Amarkantak Power

Adani Power proposes to acquire a 100% stake and control of bankrupt Lanco Amarkantak following a corporate insolvency resolution process (CIRP). Last month, Adani Power reportedly won the bid for the debt-laden firm for Rs 4,101 crore. (ET)

Economy

India's current account deficit narrows to 1.2% of GDP in Oct-Dec 2023

CAD narrowed sequentially to \$10.5 bn in the quarter ended Dec 2023 (Q3 FY24) — 1.2 per cent of GDP — from \$11.4 bn in Q2 FY24 (1.3 per cent of GDP). The deficit was also down from \$16.8 billion or 2 per cent of GDP in the year-ago period (Q3 FY23). RBI data showed that the rise in net services receipts more than compensated for a slight rise in merchandise trade deficit in Q3 FY24. Services exports grew by 5.2 per cent Y-o-Y on the back of rising exports of software, business and travel services. (ET)

International

Mastercard, Visa reach \$30 bn settlement over credit card fees

Visa and Mastercard have reached a historic settlement to limit credit and debit card fees for merchants, with some savings likely to be passed on to consumers through lower prices. The antitrust settlement is one of the largest in U.S. history, and upon court approval would resolve claims in litigation that began in 2005. Merchants have long accused Visa and Mastercard of charging inflated swipe fees, or interchange fees, when shoppers used credit or debit cards, and barring them through "anti-steering" rules from directing customers toward cheaper means of payment. (INV)

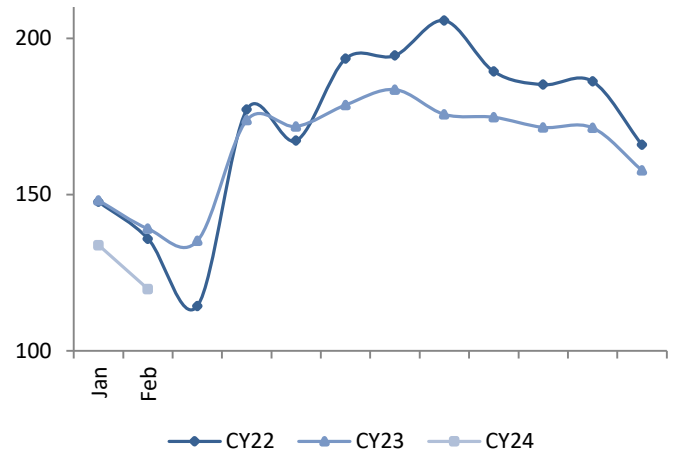
Top 5 Nifty Gainers	26-Mar	22-Mar	Var(%)
BAIFINANCE	6910	6761	2.2%
HINDALCO	559	548	2.0%
BRITANNIA	4961	4865	2.0%
ADANI PORTS	1304	1282	1.8%
LT	3670	3618	1.4%
Top 5 Nifty Losers	26-Mar	22-Mar	Var(%)
POWERGRID	270	276	-2.1%
EICHERMOT	3911	3988	-1.9%
BHARTIARTL	1213	1236	-1.9%
WIPRO	480	487	-1.5%
KOTAKBANK	1754	1776	-1.3%

BSE Index Watch	Last	1 day	1 wk	1 mth	1 yr
SENSEX	72470	-0.5%	-0.4%	-0.9%	25.7%
MIDCAP	39076	0.7%	2.1%	-1.7%	66.0%
SMLCAP	42726	-0.1%	1.8%	-6.9%	62.0%
AUTO	48247	0.0%	3.0%	1.2%	74.0%
BANKEX	52838	-0.5%	0.0%	-0.1%	18.2%
Capital Goods	59425	1.2%	3.9%	3.1%	76.1%
FMCG	19237	-0.3%	-0.3%	-1.8%	18.7%
Health Care	34561	0.2%	1.0%	-3.1%	59.1%
IT	35620	-0.6%	-4.6%	-7.5%	28.2%
METAL	27975	0.5%	2.5%	3.1%	49.3%
Oil & Gas	27392	0.8%	1.6%	-3.1%	58.0%
Power	6546	0.2%	2.6%	-2.0%	82.5%
Realty	7007	1.5%	6.2%	-4.5%	132.7%

NSE USD Futures	26-Mar	22-Mar	Var (%)
March Expiry (Rs./\$)	83.36	83.35	0.0%
April Expiry (Rs./\$)	83.32	83.67	-0.4%
Total Turnover (Rs. Crore)	61180	99346	-38%

Sectors	TTM PE
Auto	31.55
Auto Ancillary	44.04
Banking	15.75
Engineering	38.73
Cement	80.64
Diamonds & Jewellery	41.05
Housing Finance	19.76
Infrastructure & Const	32.6
Metals-Aluminium	41.77
Metal - Steel	16.56
Oil Expl.	17.42
Pharma	12.43
Power – Gen. Supp.	46.22
Information Tech.	20.15
Sugar	13.97
Telecom Serv. Prov.	82.12
Tyres	25.84

All India Tea Prices (Rs/Kg) (Source: teaboard.gov.in)



10 year G-Sec Yield	Current	Previous	Change
US	4.24%	4.23%	0 bps
Japan	0.74%	0.74%	0 bps
India	7.09%	7.09%	(0) bps
UK	3.97%	3.99%	(2) bps
Libor 3 Mths	5.57%	5.57%	(0) bps

Indian Eco Data	Current	Previous	Var(%)
Forex Reserve (US\$ in bn)	525	528	-0.7%
Inflation - WPI	0.20%	0.27%	(7) bps
Inflation - CPI	5.09%	5.10%	(1) bps

India GDP	Q3FY24	Q2FY24	Var(%)
Growth	8.36%	7.60%	76 bps

Monetary Policy	Current	Previous	Change
Repo Rate	6.50%	6.50%	0 bps
Reverse Repo Rate	3.35%	3.35%	0 bps
CRR	4.50%	4.50%	0 bps
O/S Banking System Liquidity (Rs bn)	-1141	-1492	350.6

IIP Growth %	Jan-24	Jan-23	Apr-Feb
IIP	3.8	5.8	6.0
Mining	5.9	9.0	8.5
Manufacturing	3.2	4.5	5.7
Electricity	5.6	12.7	7.0

Bulk Deal As On 26/03/24

BSE					
Security Code	Security Name	Client Name	Deal	Quantity	Price
511359	ADMANUM	SATYA PRAKASH MITTAL	S	43791	53.5
511359	ADMANUM	SATYA PRAKASH MITTAL HUF	B	43791	53.5
538351	AFEL	GULZARSINGH NAGPAL	B	94500	5.7
535916	ALSL	MANISH DILIP SHAH	S	184000	60.5
530429	ASHISHPO	SATISHGURAYYASWAMI	B	23500	28.49
530429	ASHISHPO	SWATI SATISH SWAMY	S	23500	28.49
543497	BCCL	INDIACREDIT RISK MANAGEMENT LLP	S	379200	50.87
543497	BCCL	MALANI WEALTH ADVISORS PRIVATE LIMITED	B	379200	50.87
524606	BERLDRG	HINDON TRADERS & BROKERS PRIVATE LIMITED	B	85000	29
524606	BERLDRG	SAMIR NARENDRA GUPTA	S	85170	29
526666	BIL	MANSI SHARE & STOCK ADVISORS PRIVATE LIMITED	S	83108	258
526666	BIL	SETU SECURITIES PVT LTD	B	83108	258
530249	BRIDGESE	RONAKKUMAR SANJAYBHAI PATEL	S	17150	22.73
504340	CONFINT	COMFORT ADVERTISING PVT LTD	B	100000	7.7
504340	CONFINT	GLOBALWORTH SECURITIES LIMITED	B	625000	7.7
504340	CONFINT	HIREN PARAMANANDDAS SHAH	B	90000	7.72
504340	CONFINT	KESAR TRACOM INDIA LLP	S	607915	7.7
504340	CONFINT	KUBER EQUITY SERVICES LLP	S	592181	7.7
504340	CONFINT	SAMEERMAHESHKUMARBHAMBHA	S	150000	7.7
504340	CONFINT	VIKAS RAMESH MEHTA	S	143200	7.7
504340	CONFINT	VORA FINANCIAL SERVICES PVT LTD	B	600000	7.7
543594	DPL	NIKHIL RAJESH SINGH	S	96000	10.14
531144	ELFORGE	INDIRA VASUDEVAN	S	117176	14.56
544094	EUPHORIAIT	M G TRADERS	S	19200	61.52
543521	FONE4	KRISHNA MURARI TEKRIWAL	S	100000	4.12
543521	FONE4	SUMANTEKRIWAL	B	110000	4.16
539486	GEETANJ	LEELAMMATHENUMKALJOSEPH	B	83944	4.15
539486	GEETANJ	SOHAM MULTITRADE	S	69610	4.15
542918	GIANLIFE	ARUN KUMAR GUPTA	B	300000	28.19
542918	GIANLIFE	SHIELD MULTISTATE COOPERATIVE CREDIT SOCIETY LIMITED	S	125490	29
513309	GOLKONDA	KHUSHI JAIN	S	40000	14.61
513309	GOLKONDA	SAMEER SHANTILAL DEDIA	S	36662	14.75
513309	GOLKONDA	SONIKA JAIN	B	43710	14.68
536709	INDRENEW	BELA P SHAH	S	110776	20.8
536709	INDRENEW	PRAKAASH S SHAH	S	87321	20.8
536709	INDRENEW	PRAVEEN PARASMAL BHANSALI (HUF)	B	90000	20.8
538794	JETINFRA	HITESH RAMNIKLAL MEHTA	B	28000	9.43
538794	JETINFRA	RAJUL SHAH	S	24000	9.29
514322	KAMADGIRI	ASHADEVI PRADIP GOENKA	B	53523	68.99
514322	KAMADGIRI	TRITOMA HOTELS PRIVATE LIMITED	S	55000	69.01
544139	KOURA	MULTIPLIER SHARE & STOCK ADVISORS PRIVATE LIMITED	S	42000	54.93
507912	LKPFIN	SMITA IMPEX LLP	B	75000	172.5
517554	NHCFOODS	PANNU BHANSALI	B	60000	37.01
517554	NHCFOODS	RAVI BHANSALI	S	60000	37
541703	RACONTEUR	ANNAYA MANAGEMENT CONSULTANCY PRIVATE LIMITED .	S	48000	23.38
541703	RACONTEUR	DHULL TRADING PRIVATE LIMITED	B	25600	23.33
541703	RACONTEUR	HINA HINA	B	20800	23.47
538921	RAFL	GAINFUL MULTITRADE PRIVATE LIMITED	B	125000	201.5

538921	RAFL	VIMAL KUMAR SHARMA	S	71875	201.5
543285	RCAN	SAUMIK KETAN DOSHI	S	50000	112
500366	ROLTA	MAHENDRA SHARMA	B	1000000	4.92
500366	ROLTA	MULTIPLIER SHARE & STOCK ADVISORS PRIVATE LIMITED	S	1694978	4.92
544143	ROYAL	BHARTIDEVI MOHANLAL DUHLANI	S	34000	108.79
512047	ROYALIND	MULTIPLIER SHARE & STOCK ADVISORS PRIVATE LIMITED	S	210040	10.36
544121	RUDRAGAS	JABIR MOHD SILAWAT	S	94000	179.35
542753	SEACOAST	TOPGAIN FINANCE PRIVATE LIMITED	S	7371668	4.41
542753	SEACOAST	TOPGAIN FINANCE PRIVATE LIMITED	B	2035778	4.41
538875	SELLWIN	BHUMIKA CHIRAG PATEL	B	50000	15.98
544047	SIYARAM	LC RADIANCE FUND VCC	S	111000	69.86
544035	SPL	BIREN P.GANDHI HUF	B	96000	76.2
544035	SPL	HEENA BIREN GANDHI	S	96000	76.2
533110	SPSL	VIPUL M GOPANI (HUF)	S	31537	9.25
530565	SSLFINANCE	VINITAJAIN	B	47000	108.4
537259	SUYOG	NEETA HEMANT ASHAR	S	55851	1066.86
511447	SYLPH	SWETSAM STOCK HOLDING PRIVATE LIMITED	S	830023	2.88
540955	TDSL	PUNJAB NATIONAL BANK	S	200000	9.28
537582	UNISHIRE	CAMELLIA TRADEX PRIVATE LIMITED	S	10000	2.23
537582	UNISHIRE	CAMELLIA TRADEX PRIVATE LIMITED	B	160000	2.08
537582	UNISHIRE	VINAY KIRTI MEHTA	S	250000	2.09
532378	UNIVARTS	ASHA JAYRAJ	B	200000	2.14
532378	UNIVARTS	MANISH GARODIA	S	184431	2.14
540570	VARIMAN	MADHUKAR SHETH	S	2486279	25
540570	VARIMAN	MADHUKAR SHETH	B	23454	24.44
540570	VARIMAN	MINERVA VENTURES FUND	B	2500000	25

NSE

Security Code	Security Name	Client Name	Deal	Quantity	Price
ANTGRAPHIC	Antarctica Graphics Ltd	RENU KUTHARI	SELL	816947	1.5
DIGIDRIVE	Digidrive Distributors L	FIRST AMONG EQUALS	BUY	300000	37.66
ENSER	Enser Communications Ltd	SAROJ GUPTA	SELL	82000	66.6
HCC-RE	Hindustan Construction Co	RAKESH RAJKRISHAN AGARWAL	BUY	1107723	9
JALAN	Jalan Transolu. India Ltd	ARCHANA CHAWLA	SELL	105000	4.85
MAKS	Maks Energy Sol India Ltd	INDIACREDIT RISK MANAGEMENT LLP	SELL	55500	69.82
MAKS	Maks Energy Sol India Ltd	MALANI WEALTH ADVISORS PRIVATE LIMITED	BUY	55500	69.82
MANKIND	Mankind Pharma Limited	BEIGE LIMITED	SELL	5817874	2124.71
MANKIND	Mankind Pharma Limited	BEIGE LIMITED	SELL	5817873	2120.31
MARSHALL	Marshall Machines Ltd	RASMIKANT VALJIBHAI POPAT	BUY	275000	25.9
MARSHALL	Marshall Machines Ltd	VISHAL ATHA	SELL	275000	25.9
MEDICO	Medico Remedies Limited	RAAVI VENTRUE LLP	BUY	1100000	46.73
MEDICO	Medico Remedies Limited	RAVI GOYAL (HUF)	SELL	1100000	46.73
MHHL	Mohini Health&Hygiene Ltd	ARPIT JAIN HUF	BUY	174000	52.26
MHHL	Mohini Health&Hygiene Ltd	MOHINI EMPLOYEE WELFARE TRUST	SELL	219000	52.06
ONELIFECAP	Onelife Cap Advisors Ltd	ANBUPAUL	BUY	129500	23.96
ONELIFECAP	Onelife Cap Advisors Ltd	MAYANK AGRAWAL	BUY	76500	25
RATNAVEER	Ratnaveer Precision Eng L	VIVEK MEHROTRA	SELL	391294	114.94
RICHA	Richa Info Systems Ltd	MANAK RAJ DAGA	SELL	14000	68
RICHA	Richa Info Systems Ltd	PRADEEP KUMAR DAGA	BUY	14000	68
RISHABH	Rishabh Instruments Ltd	ASHIKA GLOBAL SECURITIES PRIVATE LIMITED	BUY	216000	420.08
RISHABH	Rishabh Instruments Ltd	YADUKA FINANCIAL SERVICES LIMITED	SELL	216000	420.07
SADBHAV	Sadbhav Engineering Limit	STCI FINANCE LIMITED	SELL	1000000	25.68
SECURCRED	SecUR Credentials Limited	JAINAM BROKING LIMITED	SELL	300528	17.62
SECURCRED	SecUR Credentials Limited	JALIYAN COMMODITY	BUY	300528	17.62
SPCENET	Spacenet Enters Ind Ltd	SUVI RUBBER PVT LTD	SELL	2983881	25.9
SPENCERS	Spencer's Retail Limited	K B G CONSULTANTS PVT LTD	SELL	650000	88.35
SUULD	Suumaya Industries Ltd	AMISHA SANJAY SHAH	SELL	333586	7.13
URAVI	Uravi T And Wedg Lamp Lt	AMAYSHA TEXTILES PRIVATE LIMITED	SELL	74000	355.1
WTICAB	Wise Travel India Limited	SAKET AGARWAL	BUY	121000	190

Disclosure:

Research Reports that are published by Nirmal Bang Securities Private Limited (hereinafter referred to as "NBSPL") are for private circulation only. NBSPL is a registered Research Analyst under SEBI (Research Analyst) Regulations, 2014 having Registration no. INH000001766. NBSPL is also a registered Stock Broker with National Stock Exchange of India Limited, BSE Limited, Metropolitan Stock Exchange of India Limited, Multi Commodity Exchange of India Limited and , National Commodity and Derivative Exchange Limited in Capital Market , Equity and Commodities derivatives segments and Currency Derivatives Segment .

NBSPL has other business divisions with independent research teams separated by Chinese walls, and therefore may, at times, have different or contrary views on stocks and markets.

NBSPL or its associates have not been debarred / suspended by SEBI or any other regulatory authority for accessing / dealing in securities Market since last 20 years. NBSPL, its associates or analyst or his relatives do not hold any financial interest (Except Investment) in the subject company. NBSPL or its associates or Analyst do not have any conflict or material conflict of interest at the time of publication of the research report with the subject company. NBSPL or its associates or Analyst or his relatives may or may not hold beneficial ownership of 1% or more in the subject company at the end of the month immediately preceding the date of publication of this research report.

NBSPL or its associates / analyst has not received any compensation / managed or co-managed public offering of securities of the company covered by Analyst during the past twelve months. NBSPL or its associates have not received any compensation or other benefits from the company covered by Analyst or third party in connection with the research report. Analyst has not served as an officer, director or employee of Subject Company. NBSPL / analyst has not been engaged in market making activity of the subject company.

Analyst Certification: The research analysts and authors of these reports, hereby certify that the views expressed in this research report accurately reflects my/our personal views about the subject securities, issuers, products, sectors or industries. It is also certified that no part of the compensation of the analyst(s) was, is, or will be directly or indirectly related to the inclusion of specific recommendations or views in this research. The analyst(s) principally responsible for the preparation of this research report and has taken reasonable care to achieve and maintain independence and objectivity in making any recommendations.

Disclaimer:

The Research Report is for the personal information of the authorized recipient and does not construe to be any investment, legal or taxation advice. NBSPL is not soliciting any action based upon it. Nothing in the research report shall be construed as a solicitation to buy or sell any security or product, or to engage in or refrain from engaging in any such transaction. In preparing the research report, we did not take into account the investment objectives, financial situation and particular needs of the reader.

The research report has been prepared for the general use of the clients of NBSPL and must not be copied, either in whole or in part, or distributed or redistributed to any other person in any form. If you are not the intended recipient you must not use or disclose the information in the research report in any way. Though disseminated to all the customers simultaneously, not all customers may receive the research report at the same time. NBSPL will not treat recipients as customers by virtue of their receiving the research report. The research report is not directed or intended for distribution to or use by any person or entity resident in a state, country or any jurisdiction, where such distribution, publication, availability or use would be contrary to law, regulation or which would subject NBSPL & its group companies to registration or licensing requirements within such jurisdictions.

The report is based on the information obtained from sources believed to be reliable, but we do not make any representation or warranty that it is accurate, complete or up-to-date and it should not be relied upon as such. We accept no obligation to correct or update the information or opinions in it. NBSPL or any of its affiliates or employees shall not be in any way responsible for any loss or damage that may arise to any person from any inadvertent error in the information contained in the research report. NBSPL or any of its affiliates or employees do not provide, at any time, any express or implied warranty of any kind, regarding any matter pertaining to this report, including without limitation the implied warranties of merchantability, fitness for a particular purpose, and non-infringement. The recipients of the research report should rely on their own investigations.

This information is subject to change without any prior notice. NBSPL reserves its absolute discretion and right to make or refrain from making modifications and alterations to this statement from time to time. Nevertheless, NBSPL is committed to providing independent and transparent recommendations to its clients, and would be happy to provide information in response to specific client queries.

Before making an investment decision on the basis of research report, the reader needs to consider, with or without the assistance of an adviser, whether the advice is appropriate in light of their particular investment needs, objectives and financial circumstances. There are risks involved in securities trading. The price of securities can and does fluctuate, and an individual security may even become valueless. International investors are reminded of the additional risks inherent in international investments, such as currency fluctuations and international stock market or economic conditions, which may adversely affect the value of the investment. Opinions expressed are subject to change without any notice. Neither the company nor the director or the employees of NBSPL accept any liability whatsoever for any direct, indirect, consequential or other loss arising from any use of the research report and/or further communication in relation to the research report. Here it may be noted that neither NBSPL, nor its directors, employees, agents or representatives shall be liable for any damages whether direct or indirect, incidental, special or consequential including lost revenue or lost profit that may arise from or in connection with the use of the information contained in the research report.

Copyright of this document vests exclusively with NBSPL.

Our reports are also available on our website

Registration granted by SEBI and certification from NISM in no way guarantee performance of NBSPL or provide any assurance of returns to investors.

Nirmal Bang Research (Division of Nirmal Bang Securities Pvt. Ltd.)

B-2, 301/302, Marathon Innova,
Opp. Peninsula Corporate Park
Off. Ganpatrao Kadam Marg
Lower Parel(W), Mumbai-400013
Board No. : 91 22 6723 8000/8001
Fax. : 022 6723 8010